

PRODUCT DESCRIPTION

X3 MEDICAL v6.0 software provides live, dynamic pressure imaging capabilities to clinicians, medical researchers, and durable medical equipment (DME) dealers. Users can choose between two pressure imaging modes. The Seating Assessment Guide uses a simple, four-step process to gather consistent data, compare seating surfaces, and generate detailed reports. The Basic Session mode is a fast way of recording client interface pressures and analyzing data.



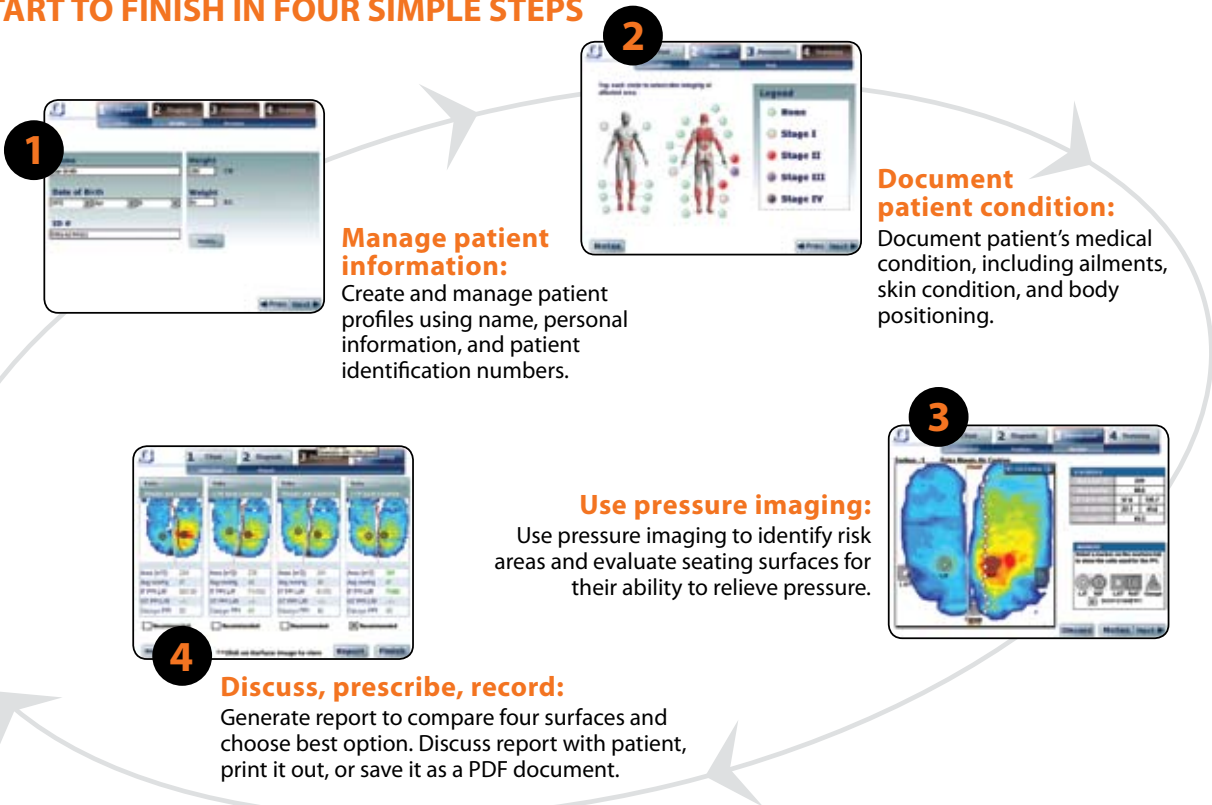
X3 MEDICAL v6.0 software: Choose the easy-to-use Seating Assessment Guide or the analytical capabilities of a Basic Session.

**SEATING ASSESSMENT GUIDE:
Added Confidence through Pressure Imaging**

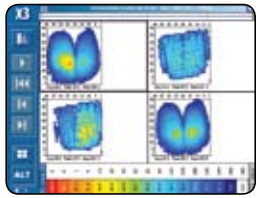
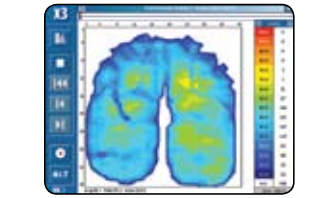
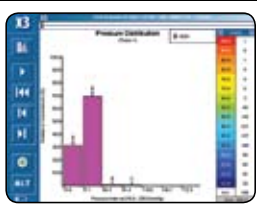
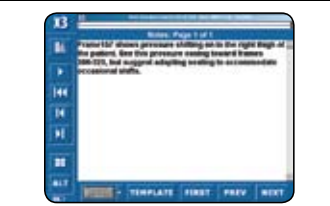
The Seating Assessment Guide has several features to help clinicians prevent and manage pressure wounds:

- Simple interface for easy navigation through four stages of seating assessment
- Comprehensive data gathering for complete documentation of surface selection
- All seating assessment information recorded within one PDF document
- Reports are easily printed, emailed, or entered into database

FROM START TO FINISH IN FOUR SIMPLE STEPS



BASIC SESSION HIGHLIGHTS

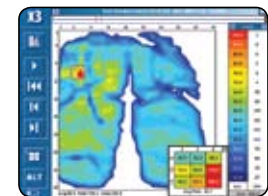
<p>File Comparison Examine up to four pressure imaging sessions at once to compare data.</p>		<p>Dynamic Preview View live, dynamic data before recording to ensure you are capturing relevant information.</p>	
<p>Multiple Viewing Modes Includes 2D, 3D, frame comparison, histogram, pressure over time, pressure distribution, and print view.</p>		<p>Comment and Notes Add comments to an overall pressure imaging session or individual frames of data.</p>	

ANALYSIS AND STATISTICS

<p>Peak Pressure</p>	<p>Monitor highest pressure on one or more cells of a given frame of pressure data.</p>	<p>Mean Reading</p>	<p>Calculate the mean pressure over the entire sensor surface.</p>
<p>Average Pressure</p>	<p>Calculate an average pressure over the entire sensor surface.</p>	<p>Sensor Cell Group Analysis</p>	<p>Define groups of sensing cells for more focused analysis of certain areas.</p>
<p>Center of Pressure</p>	<p>Visualize the virtual center of a given pressure distribution and patient movement.</p>	<p>Magnifier Window</p>	<p>Examine data more closely with moveable and resizable zoom window.</p>
<p>Contact Area</p>	<p>Calculate the area of the sensor loaded by a subject.</p>	<p>Frame Comparison</p>	<p>Compare two frames from the same pressure imaging session.</p>

ADDITIONAL FEATURES*

<p>Video Synch</p>	<p>Use a USB webcam to show the physical action producing the pressure image.</p>
<p>Pressure Movie Creation</p>	<p>Generate movie files to share pressure imaging sessions.</p>
<p>Data Import / Export</p>	<p>Import and export pressure imaging data for use in other data analysis tools.</p>
<p>Sensor Calibration Wizard</p>	<p>An easy-to-follow process that guides you through the calibration of your sensor(s).</p>
<p>Automatic Sensor Calibration</p>	<p>Automatically detect and use calibration files stored in the sensor pad itself.</p>



Magnifier Window:
 Look more closely at specific pressure values within the overall image.

* Functions and features of X3 MEDICAL v6.0 desktop version software.