

**X3 TIRE SYSTEM**

**PACKAGE DESCRIPTION**

This package offers cutting-edge insight into the interface between a tire and the road. The system provides a dynamic, high-resolution view of the pressure distribution felt by a tire's contact patch and is a critical tool for tire research and design. It includes high-speed sensing electronics as well as XSENSOR's fully featured software to provide the analysis capabilities leading tire developers and manufacturers need.

**PACKAGE COMPONENTS**

**X3 SENSOR**

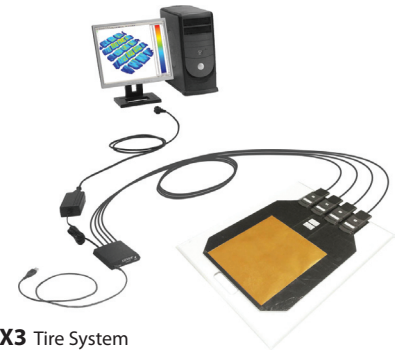
- X3 IX500:256.256.22 tire sensor
- Size of sensor array: 11.6" x 11.6" (29.4cm x 29.4cm)
- Number of sensing points: 65,536
- Resolution: 1.15mm
- Calibration Range: 10–200psi

**X3 ELECTRONICS**

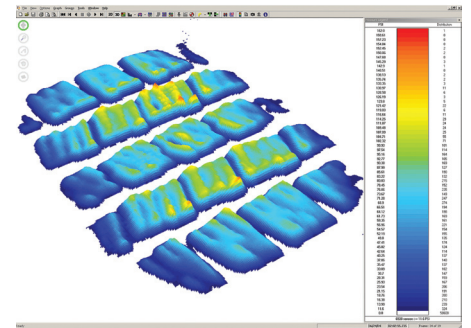
- 1 X3 PRO platform
- 4 X3 PRO SENSOR PACKS
- 1 X3 USB CABLE
- 1 Electronics Carry Case
- 1 X3 STANDARD POWER SUPPLY + "country specific" power cord

**X3 SOFTWARE**

- X3 PRO v6.0 software (5-User License)
- 12-month limited warranty on sensor pad & electronics



X3 Tire System



Pressure image of a tire tread