

QUICK START GUIDE TO SYNC X3 DISPLAY WITH DESKTOP

X3 DISPLAY Sync

Step 1.

Open the active sync setup file (MSASYNC.EXE) on the installation CD and click “Next”.

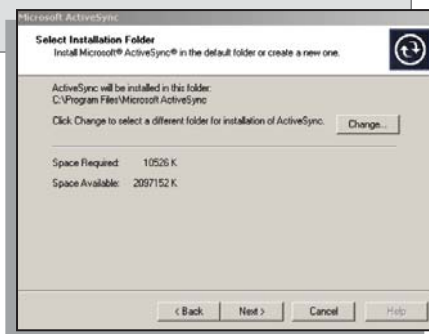
To access the file, go to the following:

- Start
- All Programs
- XSENSOR Technology Corporation
- X3 DISPLAY Tools
- Setup MS ActiveSync



Step 2.

Click “Next”. (Do not change the default installation folder)



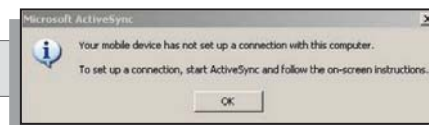
Step 3.

When the files have finished copying, press “Cancel” on the “Get Connected” window.



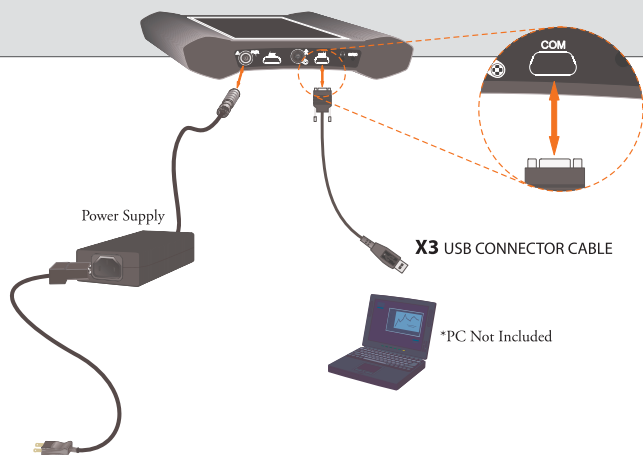
Step 4.

Click “OK”.



Step 5.

Power on the X3 DISPLAY and connect it to the computer using the supplied X3 USB CONNECTOR CABLE. It is recommended that the X3 DISPLAY be plugged in for the remaining steps.



Step 6.

After connecting the X3 DISPLAY, the “New Partnership” window will launch. Select “No” to setting up a partnership and click “Next”.



Step 7.

Close the active Sync window by clicking the “X” in the upper-right corner. You are now ready to share data between your XSENSOR X3 MEDICAL v5.0 desktop software and your X3 DISPLAY device.



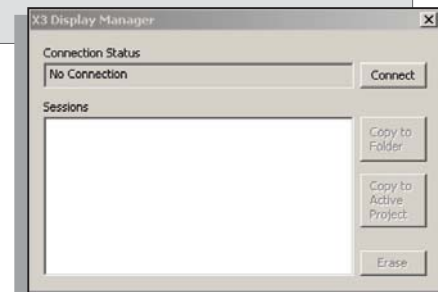
Step 8.

In the X3 MEDICAL v5.0 desktop software, click on “Tools” and then on “X3 Display Manager”.



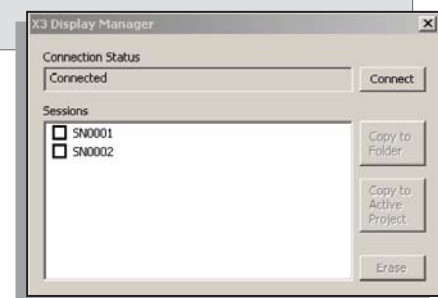
Step 9.

Click “Connect” to link up with the X3 DISPLAY.



Step 10.

Select the session files you want to work with (e.g. SN0001).



Step 11.

There are 3 options available:

- Copy to Folder: copies the selected session to a folder of your choosing.
- Copy to Active Client/Project: copies the session to the active client folder and associates the session with that client.
- Erase: removes the session from the X3 DISPLAY.

Step 12.

To finish, close the “X3 Display Manager” window and unplug the X3 USB CONNECTOR CABLE from the PC.